

Palmar Bowen Disease Mimicking Wart and Diagnosed by Dermoscopy

Ziani J, Bennani M, Douhi Z, Elloudi S, Baybay H and Mernissi FZ

¹Department of Dermatology, Hassan II Hospital University, Morocco

Volume 2 Issue 3- 2020

Received Date: 16 Jan 2020

Accepted Date: 28 Jan 2020

Published Date: 03 Feb 2020

1. Clinical Presentation

55-year-old female, phototype III, with no history of melanoma, with an erythematous papule, eroded on the surface, well limited, involving the palm skin of the right hand (Figure 1). The lesion had persisted for 2 months despite the use of topicals and salicylic acid ointments. The patient was immunocompetent, with no history of arsenic ingestion, trauma, burns or ionizing radiation at the site has been reported.

2. Dermoscopic Appearance

The dermoscopic images are showing; hairpin vessels, coiled (glomerular) vessels, islands of scale and White rosette (yellow circle) (Figure 2).

3. Evolution

Favorable result after surgical removal of the tumor; the upper and external exeresis limits were less than 1 mm, and the patient received two sessions of dynamic phototherapy (PDT), made of red light combined with methylene blue with good progression (Figure 3).



Figure 1: Clinical image. Squamous cell carcinoma in situ presenting as an erythematous papule, eroded on the surface, well demarcated, scaly, involving the palmar skin of the patient's right hand.

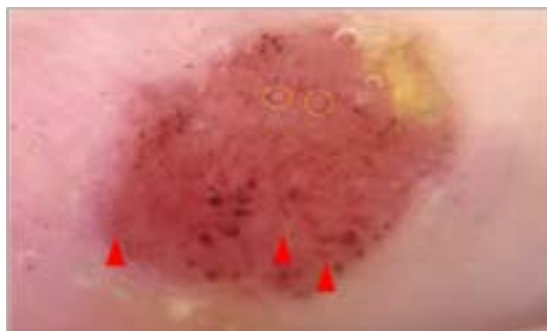


Figure 2: Dermoscopic images (using polarized light). Hairpin vessels, coiled (glomerular) vessels, islands of scale and White rosette (yellow circle).

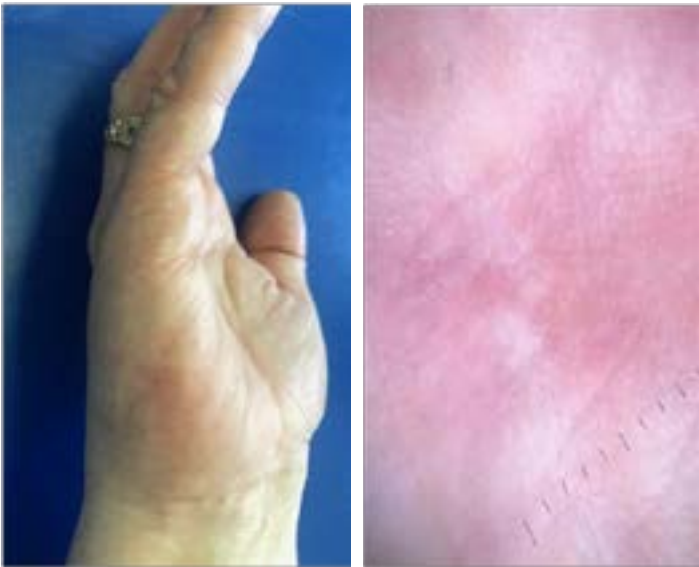


Figure 3: Clinical and dermoscopic control images after PDT