

Interruption of the Aortic Arch with AP Window and Intact Ventricular Septum

Koh Takeuchi*

Department of Cardiovascular Surgery, Yoichi Hospital, 19-1-1 Kurokawacho, Yoichi, Hokkaido 046-0003, Japan

Volume 1 Issue 2- 2018

Received Date: 10 Oct 2018

Accepted Date: 15 Oct 2018

Published Date: 20 Oct 2018

1. Clinical Image

Aortopulmonary (AP) window can be associated with aortic arch anomalies, including interrupted aortic arch with ductal patency. The rare association of distal aortopulmonary septal defect, aortic origin of the right pulmonary artery (RPA), intact ventricular septum (IVS), patent ductus arteriosus (PDA), and interrupted or Hypo plastic aortic arch, might have been originally described by Berry and his associates¹). Surgical correction was performed on day 10 of life through the median sternotomy and the patient was discharged to home. Type A interruption and aortic origin of the RPA are common combination. Patients with type B interruption are highly associated with a conotruncal anomalies. Patients with Berry syndrome never have conotruncal anomalies. 3D-CT is helpful in decision-making process for surgical correction of patient with IAA, AP window and anomalous origin of the RPA.

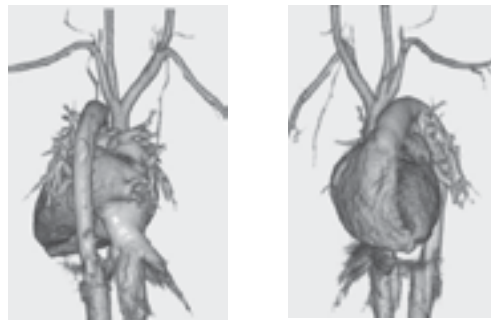


Figure 1.

*Corresponding Author (s): Koh Takeuchi, Department of Cardiovascular Surgery, Yoichi Hospital, 19-1-1 Kurokawacho, Yoichi, Hokkaido 046-0003, Japan, E-mail: koutakeuchi-circ@umin.ac.jp